



Cementtight Flooring

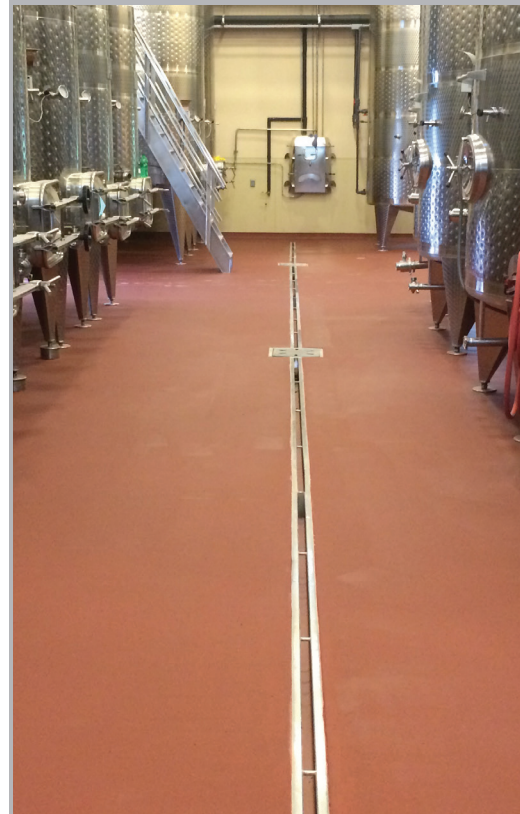
Hot environment? Cold Environment? Wet environment? Need a floor system that can withstand live steam? Oven Heat? Hot Grease? Cold/Freezer Boxes?

How often do commercial kitchens shut down so that failing floors can be repaired?

Cementtight is the only flooring option that is versatile enough to handle this extreme range of conditions.

GENERAL USES

- » Kitchens
- » Food Processing
- » Heavy Manufacturing



DUREX
Since 1964



OFFICES IN MARYLAND AND PENNSYLVANIA
PHONE 800.722.1186
durexcoverings.com



Quarry Tile grout ultimately fails and becomes a harbor for grease, grime, dirt, and bacteria. Cementight is seamless!

Cementight is a thermal shock and heat resistant industrial floor system that utilizes hybrid technology to create a durable, moisture-tolerant, and chemical-resistant, seamless floor system.

Thermal shock and heat resistance make Cementight the only choice for commercial kitchen flooring. Antimicrobial additives are available to make sure your facility stays clean!



CEMENTIGHT FLOOR PRODUCT LINE:

- » **Cementight:** Standard heavy duty kitchen and food grade flooring system
- » **Mosaix-Cementight:** Decorative heavy duty kitchen and food grade flooring system